

HAWES

Auction Mart

HAWES, NORTH YORKSHIRE. DL8 3NP

“HAWES HUNKS”



**Show & Sale of Terminal Sire Breeding Rams
To include Bluefaced Leicester Rams**

**Thursday 26th September 2024 at 5pm
To include MV Accredited Breeding Rams**

**Thank you to sale sponsors
Castle Farm Vets & Midgley Motors**

**For further information contact Auctioneers:
Ian Atkinson: 07957 256337 Kenton Foster 07711469280**

PLEASE NOTE:

All breeding sheep must have been treated with a scab approved product within 21 days prior to the sale. All vendors must complete a withdrawal declaration form with all treatments and withdrawal periods completed.

Mart Holding Number 48/409/8000

Vendors wishing to leave/deduct **luck money** can do so in the office immediately after selling.

Show Classes- Judging to commence 3:30pm prompt

Judges – Tim & Edward Brown, Agglethorpe

Class 1: Texel Shearling Rams

Class 2: Beltex & Crossbred Shearling Rams

Class 3: Suffolk Shearling Rams

Champion & Reserve Champion Ram

Please Collect Tup Discs from the office as Soon as possible.

ALL SOLD IN CATALOGUE ORDER

MV ACCREDITED BREEDING RAMS

(To unload at Drive Through Dock)

<u>Pen</u>	<u>Lot No.</u>	<u>Vendor</u>	<u>No.</u>	<u>Breed</u>	<u>Age</u>
39	1-4	B & A Myers & Daughters, Ripon	4	Pure Texel	Shlgs
40	5-7	T & J Hunter, Filey	3	Charollais	Shlgs
41	8-10	" " "	3	Beltex x	Shlgs
41	11-12	" " "	2	Beltex	Shlgs
42	13-16	J North, Giggleswick	4	Pure Texel	Shlgs
43	17-19	A Campbell, Biggar	3	Texel	Lamb
44	20-21	" " "	2	BFL	Lamb

TERMINAL SIRE & CHEVIOT RAMS

(To unload at Top Docks)

<u>Pen</u>	<u>Lot No.</u>	<u>Vendor</u>	<u>No.</u>	<u>Breed</u>	<u>Age</u>
193	22-23	KO Stones, Marrick	2	Texel	Shlgs P2 FV
194	24-25	" " "	2	NC Cheviot Park	Shlgs P2 FV
195	26	R Marwood & Son, Newsham	1	Beltex x	Shlg
196	27	K & J Stables, Durham	1	Millenium Blue	Shlg 102
197	28	JA & R Caton, Malham Moor	1	Dutch Spotted	Lamb
198	29	Z Gornall, Dent	1	3/4 Tex 1/4 Bel	Shlg

199	30	T Gornall, Dent	1	Pure Texel	Shlg
200	31-32	JK Foster, Garriston	2	Belt x Char	Shlg
	33-35	" " "	3	Pure Charollais	Lambs
201	36-38	CR & A Thornborrow, Thornton Rust	3	Texel	1 Shr
	39	" " "	1	Tex x Beltex	4 shr
202	40-44	R & D Waggett, Low Row	5	Pure Texel	Shlg P2
	45	" " " "	1	Pure Texel	2 Shr
203	46-47	AJ & RE Marston, Kirkby Stephen	2	Tex x Beltex	Shlgs
204	48-49	T Ladds, Kendal	2	Texel	Shlgs
	50	" " "	1	Tex x Beltex	Shlg
205-206	51-58	S & A Bland, Gaisgill	8	Pure Texel	Shlgs O P2
	59-60	" " "	2	Tex x Beltex	Shlgs O P2
	61	" " "	1	Pure Beltex	3 Shr O P2
	62	" " "	1	Cheviot	3 Shr O P2
207	212	G Mudd, Hawes	1	Texel	4 Shr
	213	" " "	1	Texel	2 Shr
208	63-66	JT & J Kelsall, Clapham	4	Texel	Shlgs O P2
	67	" " "	1	Tex x BFL	Shlg
209	68-70	JWA Farms, Middleham	3	Pure Texel	Shlgs
	71	" " "	1	Suffolk	Shlgs
210	72-74	TH Pounder, Crakehall	3	Tex/Bel	Shlg P2
	75-77	" " "	3	Tex/Bel	Lamb P2
211	78-79	A Ellis, Kendal	2	Dutch Spotted	Ram Lambs
212	80-87	GA & DE Slack, Appleby	8	Pure Texel	Shlgs
213	88-92	MW & HE Pedley, Little Musgrave	5	Pure Texel	Shlgs
	93	" " "	1	Bel/Tex	Shlg
214	94-95	MD & GE Shuttleworth, Barbon	2	Texel	Ram Lambs
215	96-98	L Bosomworth & Co, Northallerton	3	SFK	Shlgs
216	99-100	" " " " "	2	SFK	Lambs
217	101-102	RN Kirkby & Son, Northallerton	2	Texel	Shlgs P2
	103-105	" " "	3	Suffolk	Shlgs P2
218	106	JM & AM Morland, Kirkby Stephen	1	Tex x Beltex	Shlg P2
	107-108	" " "	2	Beltex	Shlgs P2
219	109-111	E Wyvill, Garriston	3	Easy Care	Shlg-Aged
220	112	JR Cloughton, Hawes	1	3/4 Tex 1/4 Bel	Shlg
221	113-114	JD & J Ford, Bedale	2	NC Cheviot	Shlgs P2 FV
222	115-120	Springhill Ptns, Jervaulx	6	Texel	Shlgs
223	121-123	DA & MJ Pedley, Kirkby Stephen	3	Pure Texel	Shlgs
224	124-125	L Sharpe, Ulverston	2	Berrichon	Shlg
	126	" " "	1	Texel	Shlg

BLUEFACED LEICESTER RAMS

(To unload at Top Docks)

225	127-129	AC & SG Ramsden, Hawes	3	Shlgs
	130	" " "	1	2 Shr
226	131-132	K & A Woof, Raydale	2	Shlgs
	133-135	" " " "	3	2 Shr
227	136	B Spence & Sons, Aysgarth	1	3 Shr
228	137	JA & R Caton, Malham Moor	1	Ram Lamb
229	138-139	CT & JE Willoughby, Redmire	2	Shlgs
	140-141	" " "	2	Lambs
230	142	J Caton, Settle	1	Shlg
	143	" " "	1	2 Shr
231	144-145	JK Foster, Garriston (Reg Traditional)	2	2 shr
	146-147	" " (Reg Traditional)	2	Shlg
232	148-152	A Lodge, Malham Moor	5	Shlgs +
233	153-155	RS Harker & Son, Grayrigg	3	Shlgs +
234	156-159	L & A Bainbridge, Leyburn	4	Shlgs
235	160-161	DT Dinsdale & Son, Aysgarth	2	Shlgs
	162	" " "	1	Ram Lamb 102
236	163-164	R Bland, Tebay (Registered)	2	Shlgs O P2
237	165-171	GR Scarr, Askrigg	7	Shlgs
238	172-173	EW & JR Parkinson, Dunsop Bridge (Registered)	2	Shlgs
239	174-176	LJ Winspear, Askrigg	3	Lambs
240	177	JC & E Pedley & Sons, Little Musgrave	1	Shlg
	178-179	" " "	2	Lambs
241	180-182	JH Pedley, Barbon (Registered)	3	Shlgs
242	183-184	JW & ME Taylor & Sons, Dent	2	Ram Lambs
243	185-186	D Crane, Guisborough	2	2 Shr
	187-192	" " "	6	Shlg
244	193-194	SH & TA & M Sutcliffe, Horton in Ribbles	2	Shlgs
245	195	G Mudd, Hawes	1	3 Shr
	196-198	" " "	3	Shlgs
	199-200	" " "	2	Lambs
246	201-202	J Pickles, Chapel-le-Dale	2	Aged
247	203-204	SD Thompson, Aysgarth	2	Shgs O P2
248	205-209	S Yates, Ellingstring	5	Shlgs P2
	210	" " "	1	Aged O P2
249	211	A Spence, Aysgarth (Registered)	1	Aged O P2



MIDGLEY MOTOR CARS

*Our family driving yours
for over 80 years.*



ISUZU
**THE PICK-UP
PROFESSIONALS**



CONTACT US:

Airedale Business Centre, Keighley Road,
Skipton, North Yorkshire, BD23 2TZ

Tel: 01756 797 652

Wisp Hill Grange, Grassington,
Skipton, North Yorkshire, BD23 5NG

Tel: 01756 753 136

www.midgley.co.uk



Castle Farm
Vets

ADVANCED BREEDING SERVICES

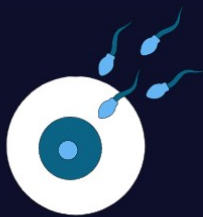


LEADERS IN BOTH **SHEEP & CATTLE**

Embryo **Transfer**

Artificial Insemination

In Vitro Fertilisation



Advanced Breeding



Complete Clinical Care



Competitive Pricing

BARNARD CASTLE 
T:01833 695 695

DARLINGTON 
T:01325 790 713

MALTON 
T:01653 531 151

SELBY 
T:01757 826 099

www.castlefarmvets.co.uk

Notes

Contact Details:

Telephone: 01969 667207

Email: office@hawesmart.co.uk

Website: www.hawesmart.co.uk

Sales Fixtures

Sales of Store Lambs Fortnightly

Monday 30th September

Second Show & Sale of Mule, Masham, Cheviot Mules & Continental Gimmer Lambs. Show classes for Pens of 10 N of E Mules & Cheviot Mule Gimmer Lambs

Thursday 3rd October

The Renowned Great Annual Show & Sale of Bluefaced Leicester Crossing Rams & Females on behalf of the Bluefaced Leicester Sheep Breeders Association

Monday 7th October

First Annual Show & Sale of Swaledale Breeding Ewes & Gimmer Shearlings. Sale includes Crossed & Uncrossed Ewes.

Catalogue closes Tuesday 24th September

Saturday 12th October

Annual Show & Sale of Swaledale Gimmer Lambs & Gimmer Shearlings

Entries close Tuesday 1st October

Monday 14th October

Third sale of Mule, Masham, Cheviot Mules & Continental Gimmer Lambs

Catalogue closes Tues 1st October

Tuesday 15th October

Second Annual Sale of Breeding Ewes & Gimmer Shearlings

Followed by Second sale of Terminal Sire Breeding Rams

Catalogue closes Tuesday 8th October

NEW SALES FIXTURE- Saturday 2nd November

GREGG DAY

End of season sale of all classes of Breeding Sheep, Gimmer Shearlings & Gimmer Lambs

Second Show & Sale of Swaledale Rams, followed by sale of all classes of Breeding Rams

incl Terminal Sires & BFL

Catalogue Closes Thursday 24th October